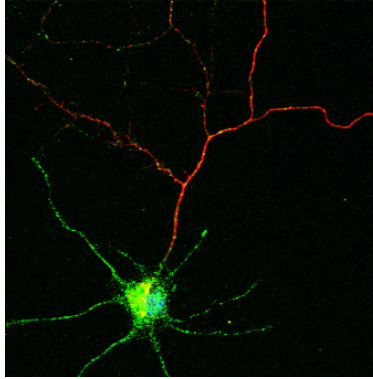


LUDWIG-
MAXIMILIANS-
UNIVERSITÄT
MÜNCHEN



Cell and Developmental Biology
Biozentrum der LMU München



Prof. Dr. Lois Weisman

Life Science Institute
Cell & Developmental Biology Department
University of Michigan, U.S.A.

**From yeast to humans:
Insights into myosin V based transport
and phosphoinositide signalling**

**Monday, October 8, 2012
5:00 pm**

Lecture Hall B01.027
Großhaderner Str. 2
82152 Planegg-Martinsried

Host: Barbara Conradt, conradt@bio.lmu.de